

SteamTab V4.0 (Demo)

Thermodynamic and Transport Properties of Water and Steam Add-in Package for Microsoft Excel for Windows

By

ChemicaLogic Corporation
99 South Bedford Street, Suite 207
Burlington, MA 01803
USA

Tel: 781-425-6738

Fax: 781-425-6741

Email: clc.support@chemicallogic.com

Demo Limitation

The SteamTab demo is limited in temperature and pressure. The temperature and pressure limitations of are:

$150\text{ }^{\circ}\text{C} \leq \text{Temperature} \leq 200\text{ }^{\circ}\text{C}$, and

$5\text{ bar} \leq \text{Pressure} \leq 10\text{ bar}$

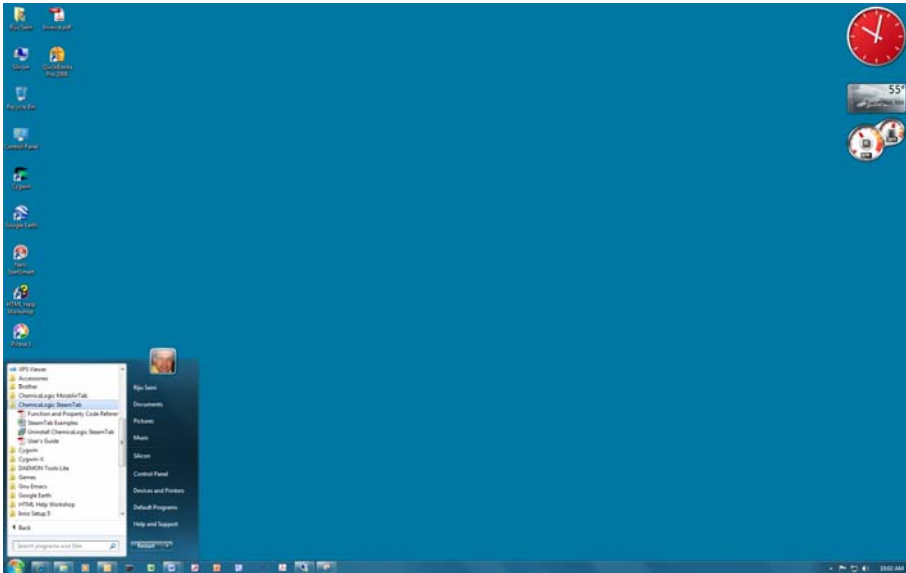
If you specify a temperature or pressure range that is outside the demo range, SteamTab will return the #VALUE! error in Excel.

Installation

SteamTab contains an automatic installation program that will install the add-in within Excel as well as certain example files, document files and the online help file. Follow these steps to correctly install SteamTab on your computer:

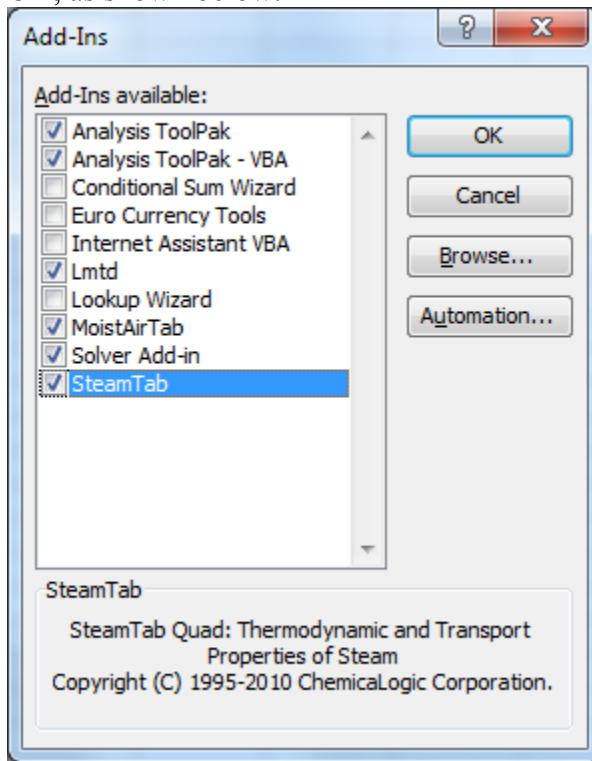
1. To install SteamTab on your computer you need Administrative privileges. If your currently logged in account does not have Administrative privileges, log in to an account that has Administrative privileges before installing SteamTab.
2. Make sure Excel is not running.
3. Start the SteamTab installation by running the program: `SETUP-STEAMTAB-DEMO.EXE` and follow the installation instructions.
4. Once installation is complete you can access SteamTab from Excel. If you need to access the User's Guide and other documents that are installed, go to Window's Start menu, click on Programs and you should see a folder called ChemicaLogic SteamTab as shown

below:

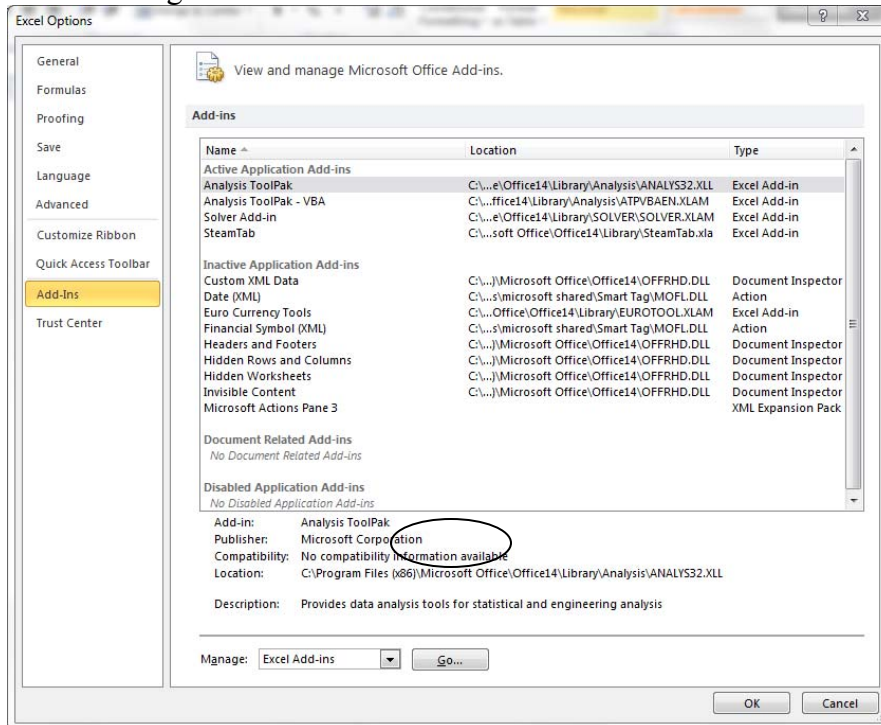


5. If you installed SteamTab from a special account with Administrative privileges, log off and log back into your normal account and activate the add-in from Excel. (This step is not required if your normal account has Administrative privileges). To activate the SteamTab add-in from Excel, use the following steps:

For Excel 2003 (or earlier): Start Excel and from the “Tools” menu select “Add-ins...” and when the Add-ins dialog box appears, put a check mark next to SteamTab and click on OK, as shown below:



For Excel 2007/2010: Start Excel, and click on “File” ribbon and select “Options”. When the Excel Options dialog opens, select “Add-ins” from the left-hand side menu and click on the Manage Excel-Add-ins “Go” button at the bottom of the screen as shown below:



When the Add-ins dialog box appears, place a check mark next to SteamTab and select OK to activate SteamTab:

